

Simon | Smart



Practical and Simple  
Just as You Imagine

**simon**

**simon**

Barcelona · Belo Horizonte · Brussels · Buenos Aires · Casablanca · Hanoi  
Istanbul · Kiev · Lima · Lisbon · Madrid · Mexico D.F. · Moscow · New Delhi  
Paris · Sao Paulo · Shanghai · Turin · Warsaw · Jakarta

**SIMON, S.A.**  
Tel. 902 109 100  
Web. [www.simonelectric.com](http://www.simonelectric.com)

**Vietnam Office of Simon Electric**  
Tel. +84 4 3222750  
Web. [www.simon.vn](http://www.simon.vn)

**Simon Electric (China)**  
Web. <http://international.simon.com.cn>  
E-mail. [export@simon-apac.com](mailto:export@simon-apac.com)

**PT Simon Elektrik Indonesia**  
Tel. +6221 52960373  
Web. [www.simonelektrik.co.id](http://www.simonelektrik.co.id)

## Simon in the World

Simon was established by Arturo Simon in 1916. The earliest factory was located in Olot, Catalonia, Spain. In 1972, the headquarter of Simon Group was relocated to Barcelona, which is renowned as the Flower of Europe.

Simon mainly specializes in producing switches, sockets, lighting and home smart systems. Always dedicated to product innovation, Simon has developed many products with intellectual property rights and won many honors, such as Spanish Royal Outstanding Enterprise and Spain's national Product Design Award.

Through a century of development, Simon group has established production bases in countries around the world, including China, Russia, India, Brazil, Mexico, Poland etc., and a sales network that covers over 90 countries across four continents.

## Simon in China

Simon Electric (China) Co., Ltd. is a wholly foreign-invested enterprise in China established by Simon Group of Spain.

Simon Group was founded by Arturo Simon in 1916 with headquarter in Barcelona. Currently, it has production bases in China, Russia, India, Brazil, Mexico, Poland etc., and a sales network covering over 90 countries across four continents.

Depending on the technical support of Simon Group, Simon China has established a R&D team to meet Chinese market demand. Its laboratory, which focuses on testing product quality and performance, has been certified by China National Accreditation Service for Conformity Assessment (CNAS). It has developed a variety of products, which are related to switches & sockets, lighting, low-voltage electrical apparatus, smart control etc., and which have passed China Compulsory Certification. Furthermore, it owns over 100 patents.

Owing to their elegant designs, premium materials, exquisite techniques, high safety standards and strong after sales service, Simon products are used in key projects, including the National Stadium, the Water Cube, CCTV Headquarters, Terminal T3 of Beijing Capital International Airport, Shanghai World Expo and Guangzhou Asian Games City.

Simon China has a complete marketing service network, nearly 30 offices all over China and nearly 2,000 distributors. It has extended its e-commerce business to all mainstream e-commerce platforms.

Simon China has implemented management systems, such as ISO 9001: 2015, ISO 14001: 2015 and OHSAS 18001: 2007. All its products have passed TUV NORD certification.

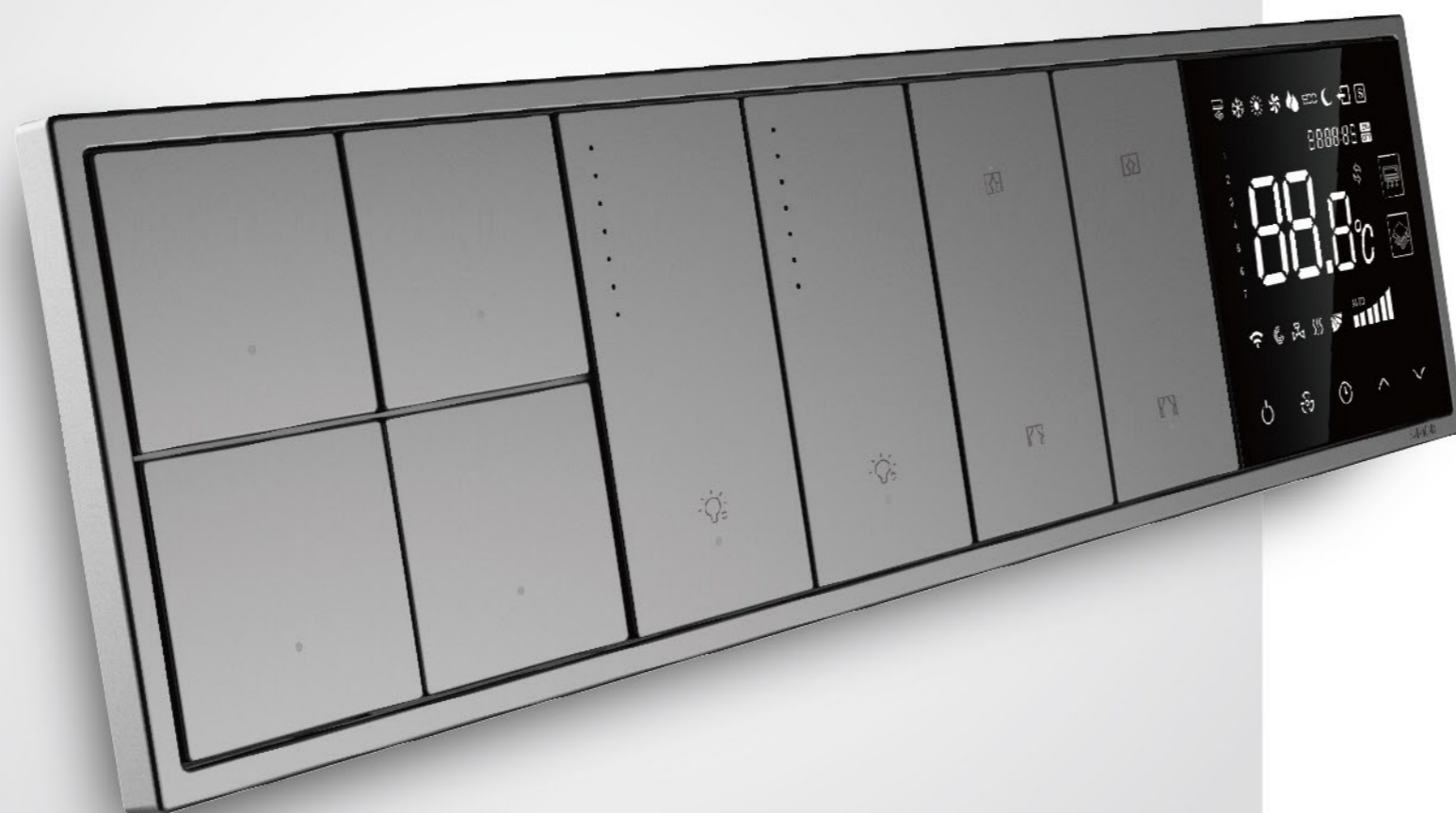


## Contents

|                            |    |
|----------------------------|----|
| Total Solution             | 05 |
| Wireless Framework         | 07 |
| Application Scenarios      | 09 |
| Ten Major Product Features | 19 |
| Four Major Systems         | 23 |
| Product List               | 27 |



# Simon|Smart



## Smart switch, practical and simple

Built-in imported MCU chip, with smart control,  
maintaining classical physical touch switching mode.  
Make difficult things simple, achieve scenario control with one key.  
“Zero-based” control of smart life.

## Free Combinations, just as you Imagine

Individual scenario setting, control as you wish.  
Individual scenario setting, control as you wish.  
Remote control, automatic condition trigger, no need to fear accidents.

Simon|Smart  
Smart Total Solution



R: Smart Dimmer Switch  
Slide control the light,  
create the appropriate brightness environment.

S: Smart Two way Switch  
Freely select a two way lamplight circuit.



T: Smart Bulb  
Control switches, light dimming,  
and color modulation via mobile phone and voice.



O: Air Conditioner Partner  
With infrared control,  
it is able to control the air conditioner  
in the room via mobile phone and voice.



P: Smart Loudspeaker Box (Tmall spirit)  
Voice control of lamplight and electrical  
equipment at home.



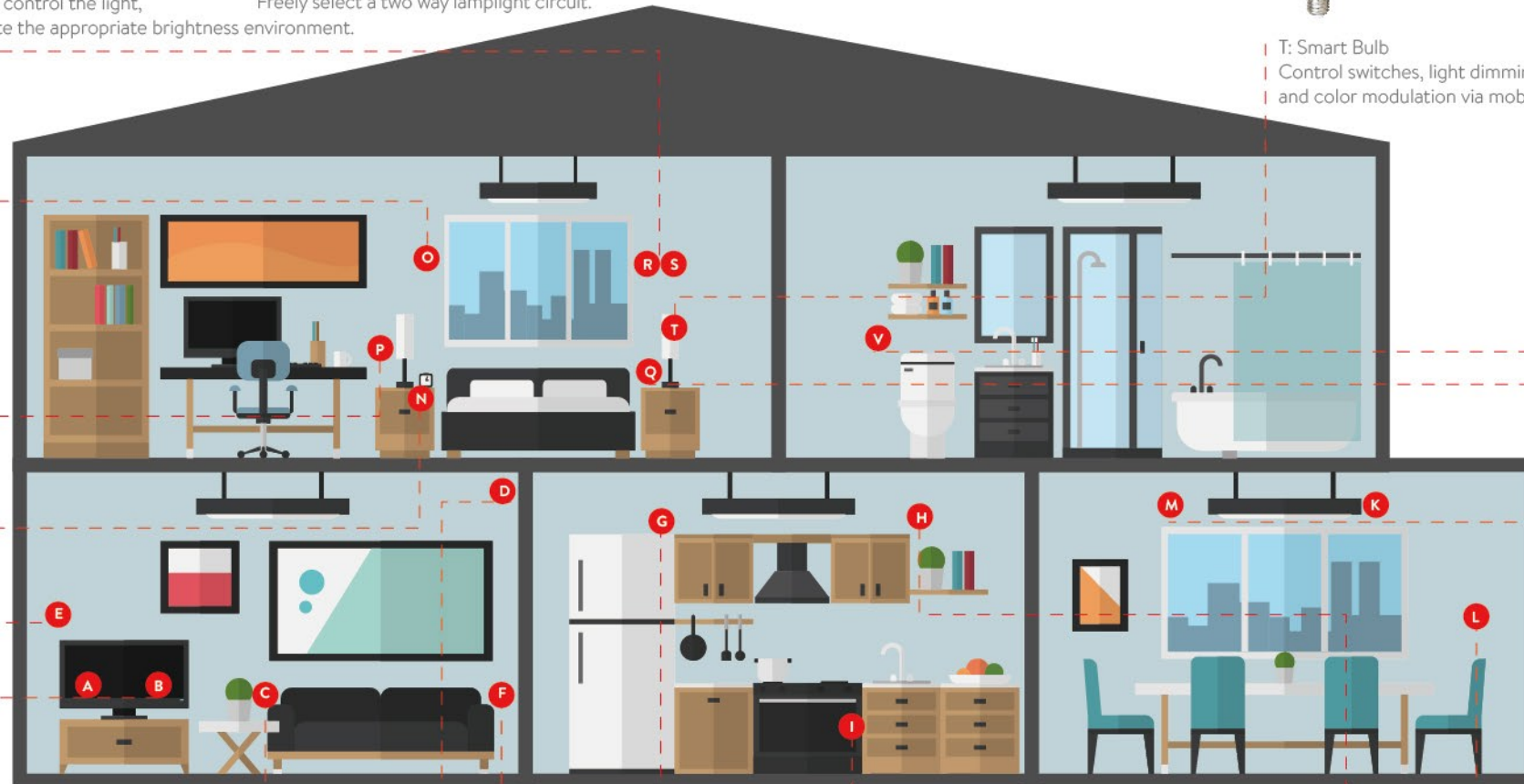
V: Smart Switch  
Achieve remote control or scenario linkage, or  
can also be used as a traditional switch.



N: Smart Human Body Infrared Motion  
Sensor  
Achieve illumination with a night lamp  
when getting up in the night. An alarm  
push function can also be set up.



Q: Smart Temperature and Humidity Sensor  
Real-time monitoring of temperature and  
humidity changes. Can be linked with  
other equipment.



M: Smart Door and Window Magnetism  
Alarm information can be pushed to the mobile phone and  
conduct photograph monitoring with motion detection of  
the cloud camera. With no wires, it can be pasted easily.



K: Smart Ceiling Light  
Adjust warm and cold light as required,  
supports APP control and voice control,  
and can combine scenarios with other lights at home.



E: Smart Scenario Switch  
Customized scenario control.



C: Smart PM2.5 Detector  
Real time monitoring of data like  
PM2.5, temperature,  
and humidity, etc.,  
and can be linked with an air cleaner.



F: Smart Air Cleaner  
Use with the smart  
PM2.5 detector/smart  
temperature and  
humidity sensor,  
to automatically trigger  
operation after  
parameter setting.



I: Smart Water Logging Detector  
If an overflow occurs, it is able to  
be linked with the smart socket to  
switch off surrounding  
electric appliances.



H: Smart Smoke Alarm  
Alarms and is pushed to  
the mobile phone in time.  
Paste and use, has 3C  
fire protection authentication.



L: Smart Temperature Controller  
Matched with fan coil type and VRV/VRF type air conditioner.



B: Smart Standalone Type Gateway



A: Smart Infrared Remote Control  
Replaces the traditional infrared remote control,  
and becomes the main center of smart products.



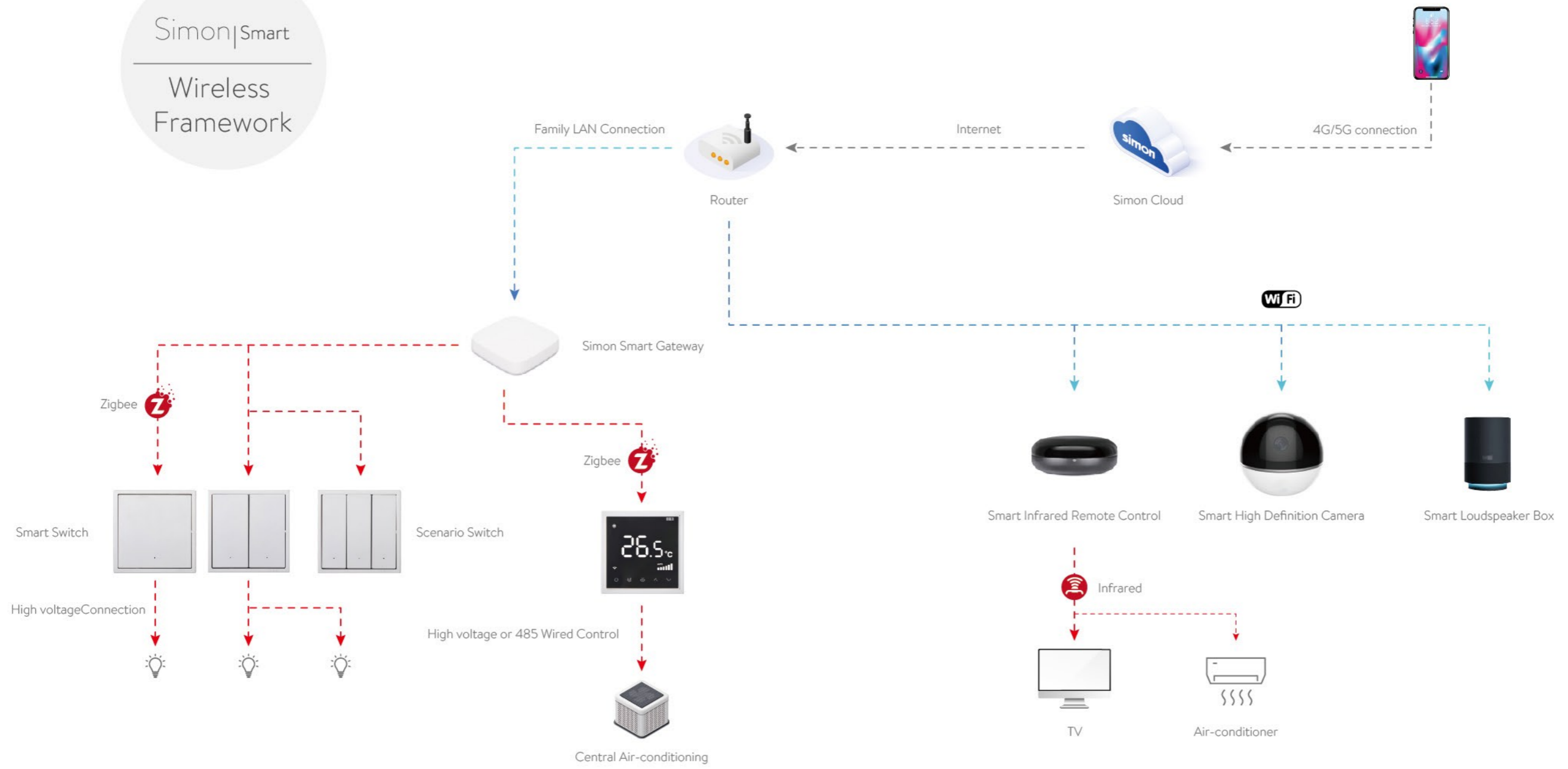
D: Smart High Definition Camera  
Automatic tracking detection  
and alarm function.



G: Smart Inflammable Gas Alarm  
If natural gas leakage occurs,  
an alarm will soon be set and  
pushed to the mobile phone in time.

Apart Simon's own products, Smart system can also connect with third party brands' products, such as smart door lock, air cleaner and floor mopping robot.

Simon|Smart  
Wireless Framework





Simon|Smart

Application Scenarios



## Smart Hallway

Return Home With One Key



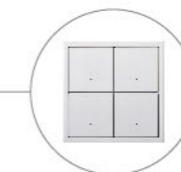
### Smart Human Body Infrared Motion Sensor

In a dark environment, the sensor can sensitively detect human movement, then switch on the light in hallway, to welcome you back home.



### Smart Door and Window Magnet

With one-key defense, any abnormal phenomenon of the doors or windows will produce alarm information pushed to your mobile phone.



### Smart Switch, Smart Scenario Switch

Freely set the lamplight and curtains in the hallway, corridor, and living room, etc. to the home mode. Launch home mode to create your own comfortable scene.



### Smart Door Lock

Multiple unlocking methods like fingerprint, password, and remote control, etc., are safe and reliable. Anti-dismantle alarm, scenario linkage.



### Smart Peep Hole

Remotely check visitors via the Simon Smart Home APP, and conduct communication. Safe and convenient. Turn on the stranger linger alarm, to protect the safety of your home.





## Smart Kitchen

No need to worried about gas leakage



### Smart Smoke Alarm

Helps you fully enjoy cooking and enjoying food.



### Smart Inflammable Gas Alarm

Discover potential safety hazards in time, and achieve safety protection of your family members.



### Smart Water Logging Detector

If water overflows from the sink, the sensitive detector will push the information to your mobile phone in time, to avoid property loss.



### Smart Multi-gang Panel

Based on the Simon i7 smart switch multi-gang panel, it maintains the high quality and appearance of the i7 series, and achieves functions including light dimming, curtain control, scenario control, air conditioner, underfloor heating, and central ventilation control, etc.



### Smart Floor Mopping Robot

Open household duty mode and it will automatically clean the house for you.



### Smart PM2.5 Detector

Always detect the ambient air quality at home, and be linked with equipment like the air cleaner, etc.



### Smart Infrared Remote Control

Open film-watching scenario via voice or mobile phone control.



### Smart Lighting

Smart lamps, remote control, light dimming, and color modulation. Free control.



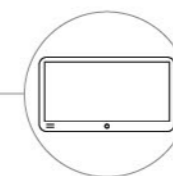
### Smart Air Cleaner

Achieve linkage with the PM2.5 sensor, and to maintain fresh indoor air.



### Smart High Definition Camera

Sense human movement after switching on. The camera can automatically switch on.



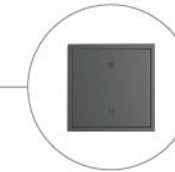
### Background Music System

Open and control it via voice or mobile phone.

## Smart Living Room More Convenient

## Smart Bedroom

Free Control



### Smart Curtain

Remote control, scenario linkage.



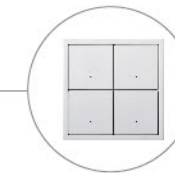
### Smart Temperature and Humidity Sensor

Automatically record the temperature and humidity in the bedroom. If the humidity is too high, it will automatically link with the dehumidifier of the air conditioner to maintain a healthy environment.



### Smart Human Body Infrared Motion Sensor

Automatically open working mode at night. When it detects movement of getting out of the bed, it will automatically turn on the night lamp, to guarantee safety at night.



### Smart Scenario Switch

Whether for sleeping or getting up, it can control multiple devices with one key, which is convenient and comfortable.



### Voice Control -- Tmall spirit, Alexa (Google Assistant)

Users can sleep on the bed and switch off the lamps and curtains directly via voice. At the end of the day, the user only needs to say "good night" and then light will switch to sleep scene.



### Smart Bulb Light (RGBW)

APP and voice control, create a colorful atmosphere.



### Smart Humidifier

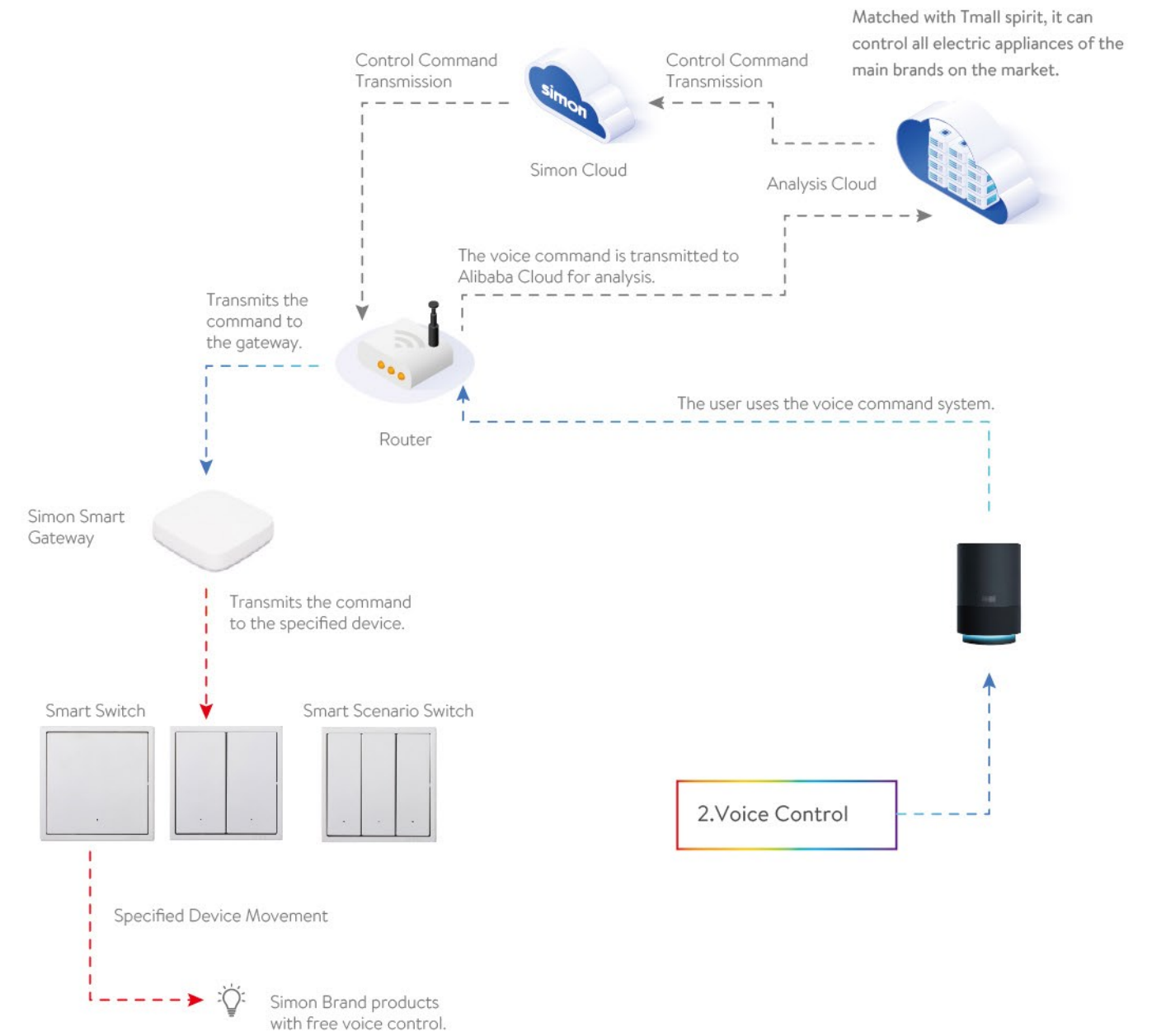
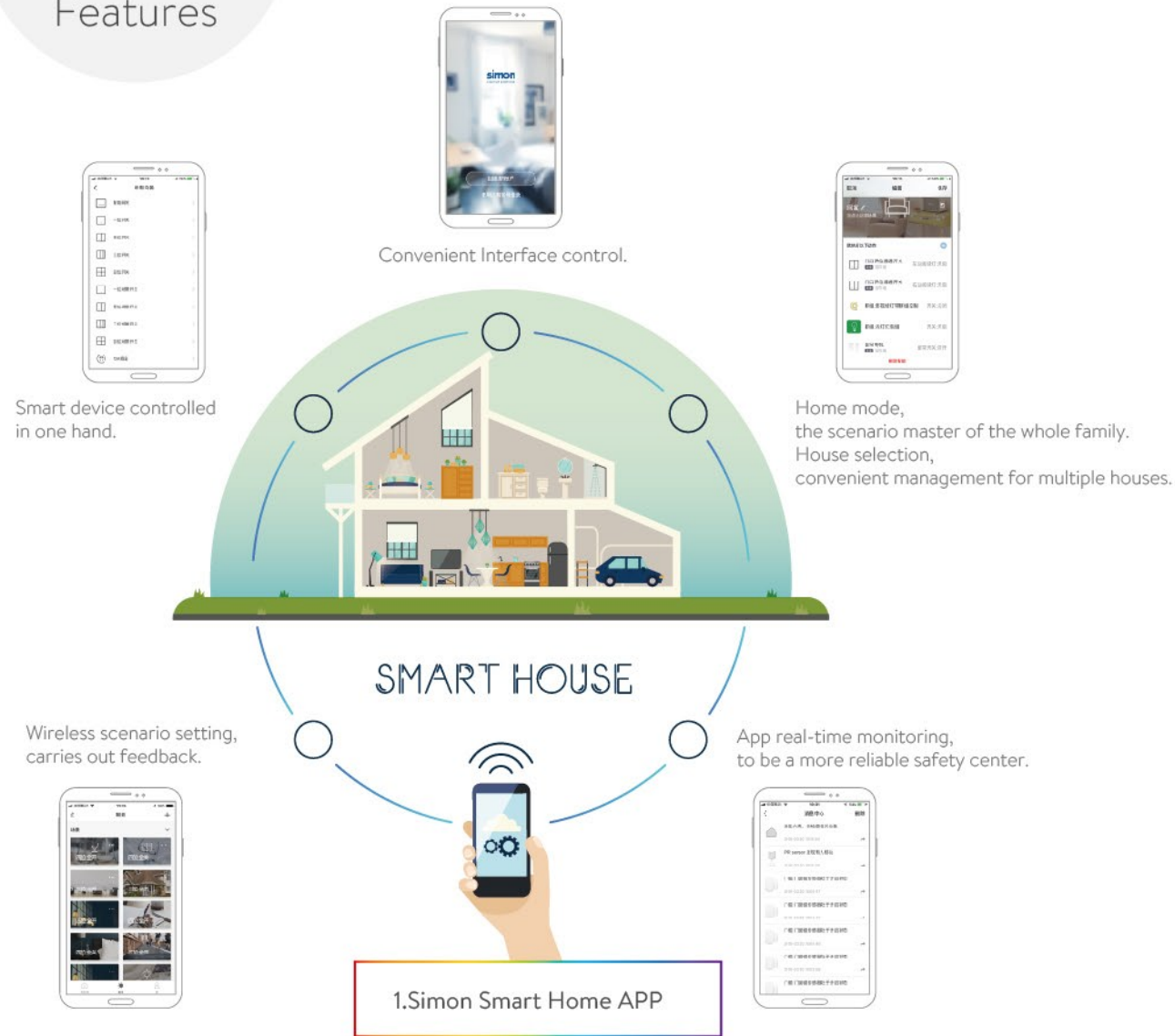
Linked with the temperature and humidity sensor, to automatically set a constant comfortable temperature for the human body.

# Simon|Smart

Ten Major Product Features



Simon|Smart  
Ten Major Product Features



3.Leaning Technology

Adopts the latest zigbee3.0 technology, embracing inclusiveness; easier for different devices to access and wider linkage with each other.

4.Scenario Control.

Makes difficult things simple. Achieve presupposed scenarios with one key, to save you from having to perform the procedures for controlling each electric appliance and switch.

5.Automatic Control

Sensitively sense external environmental changes to automatically trigger various smart devices.

6.Simple Installation

No wires for the sensor, only paste then use. Saves on the trouble of installation.

7.Remote Control

Achieve real-time control of home appliances via the mobile APP.

8.Cycle Management

Customize individual daily life for you, make your life easier.

9.Satisfy all Demands

Millisecond-class device awakening speed, to rapidly respond to various commands.

10.Safe and Secure

AES128 bit advanced encryption standard, to protect home safety.

# Simon|Smart

Four Major Systems



## Four Major Systems



**1 Light Control System**  
Smart light control, offering you more possibilities. Adopts the Simon i7 original multi-gang panel, without any problem of disordered switches. One-key control, individual scenarios, to make your life better.

Switch/Scenario

Maintains classical physical touch switching mode, supports off-line control. Even if the network breaks, it can also achieve scenario control.

Light Dimming

Conveniently slide for light dimming, with a memory function.

Curtain

Open/close the curtain and stop it in any position

Achieve direct communication between switches via zigbee technology.

**2 Environmental Control System**  
Reduce air-conditioning energy consumption, automatically control temperature and humidity. Simon-Smart cares about the health of you and your family members.

Smart touch function key for central air-conditioning temperature controller.

Smart touch function key for underfloor heating temperature controller.

Smart function key for central ventilation switch.

Smart PM2.5 Detector

Smart Temperature and Humidity Sensor

Supports RS485 agreement butt joint.

**3 Security and Protection Management System**  
Transmit the real-time dynamic state of the monitored devices to the user terminal via various sensing devices. The condition at home is clear at a glance.

Smart Inflammable Gas Alarm.

Natural gas detection, 220V alternating current power supply.

Smart Smoke Alarm

Battery power supply, super low power consumption design. Battery life reaches 36 months, with a low battery reminder.

Smart Door and Window Magnetism.

Battery power supply, no need for wires, only paste and use.

Smart Water Logging Detector.

Battery power supply, place at will.

Smart Human Body Infrared Motion Sensor.

Detection distance of 7 meters, detection angle of 170 degrees.

**4 Entertainment Management System**  
Through smart multimedia player and smart infrared remote control, match with your TV and loudspeaker box, etc., to create your own entertainment system.

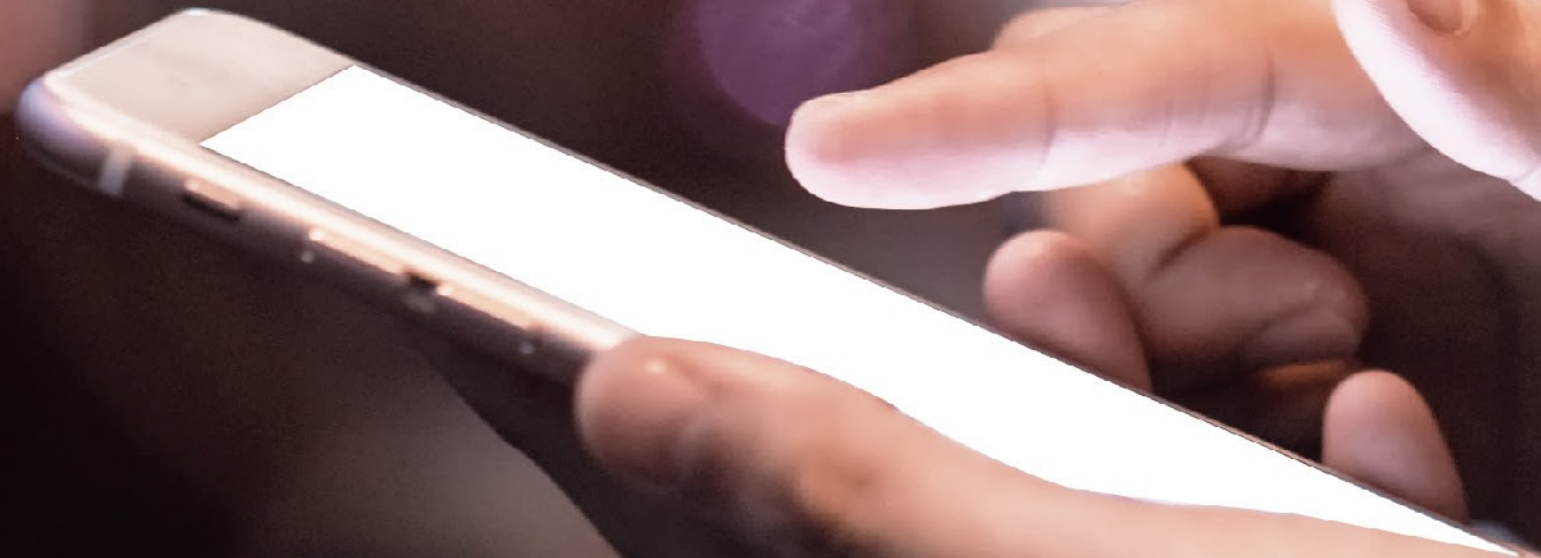
Smart Infrared Remote Control: With a built-in infrared code for major mainstream home appliance brands.

Various Infrared Home Appliance

Background Music System: the music library is on the network cloud platform. Supports music being pushed from mobile phone to background music, and can be linked with the scenario.

# Simon|Smart

Product List





I7-Smart Series Products



S2100-E820 1 Gang i7-smart Switch Module  
S2146-E820 1 Gang i7-smart Switch Module (Champagne)  
S2161-E820 1 Gang i7-smart Switch Module (Grey)



S2100-E821 2 Gang i7-smart Switch Module  
S2146-E821 2 Gang i7-smart Switch Module (Champagne)  
S2161-E821 2 Gang i7-smart Switch Module (Grey)



S2100-E822 3 Gang i7-smart Switch Module  
S2146-E822 3 Gang i7-smart Switch Module (Champagne)  
S2161-E822 3 Gang i7-smart Switch Module (Grey)



S2100-E823 4 Gang i7-smart Switch Module  
S2146-E823 4 Gang i7-smart Switch Module (Champagne)  
S2161-E823 4 Gang i7-smart Switch Module (Grey)

I7-Smart Series Products



S2100-E824 1 Gang i7-smart Scene Module  
S2146-E824 1 Gang i7-smart Scene Module (Champagne)  
S2161-E824 1 Gang i7-smart Scene Module (Grey)



S2100-E825 2 Gang i7-smart Scene Module  
S2146-E825 2 Gang i7-smart Scene Module (Champagne)  
S2161-E825 2 Gang i7-smart Scene Module (Grey)



S2100-E826 3 Gang i7-smart Scene Module  
S2146-E826 3 Gang i7-smart Scene Module (Champagne)  
S2161-E826 3 Gang i7-smart Scene Module (Grey)



S2100-E827 4 Gang i7-smart Scene Module  
S2146-E827 4 Gang i7-smart Scene Module (Champagne)  
S2161-E827 4 Gang i7-smart Scene Module (Grey)

I7-Smart Series Products



- S2100-E834 1 Gang i7-smart Dimmable Switch Module
- S2146-E834 1 Gang i7-smart Dimmable Switch Module (Champagne)
- S2161-E834 1 Gang i7-smart Dimmable Switch Module (Grey)



- S2100-E835 2 Gang i7-smart Dimmable Switch Module
- S2146-E835 2 Gang i7-smart Dimmable Switch Module (Champagne)
- S2161-E835 2 Gang i7-smart Dimmable Switch Module (Grey)



- S2100-E836 1 Gang i7-smart Curtain Switch Module
- S2146-E836 1 Gang i7-smart Curtain Switch Module (Champagne)
- S2161-E836 1 Gang i7-smart Curtain Switch Module (Grey)



- S2100-E837 2 Gang i7-smart Curtain Switch Module
- S2146-E837 2 Gang i7-smart Curtain Switch Module (Champagne)
- S2161-E837 2 Gang i7-smart Curtain Switch Module (Grey)

I7-Smart Series Products



- S2100-E700-019 i7-smart Thermostat for Central A/C Module
- S2146-E700-019 i7-smart Thermostat for Central A/C Module (Champagne)
- S2161-E700-019 i7-smart Thermostat for Central A/C Module (Grey)



- S2100-E700-021 i7-smart Thermostat for Floor Heating Module (Smart, Electric warming)
- S2146-E700-021 i7-smart Thermostat for Floor Heating Module (Smart, Electric warming) (Champagne)
- S2161-E700-021 i7-smart Thermostat for Floor Heating Module (Smart, Electric warming) (Grey)



- S2100-E700-022 i7-smart Thermostat for Central A/C Module (for Hisense Hitachi)
- S2146-E700-022 i7-smart Thermostat for Central A/C Module (for Hisense Hitachi) (Champagne)
- S2161-E700-022 i7-smart Thermostat for Central A/C Module (for Hisense Hitachi) (Grey)



- S2100-E700-023 i7-smart Thermostat for Fresh Air Module
- S2146-E700-023 i7-smart Thermostat for Fresh Air Module (Champagne)
- S2161-E700-023 i7-smart Thermostat for Fresh Air Module (Grey)

Simon-Smart Platform Product

---



S2200-0802

Smart Gateway

---



S2200-0905

Smart magnet for door or curtain

---



S2200-0904

Smart Sensor of Temperature and humidity

---



S2200-0906

Smart Sensor of Presence Motion

---

Simon-Smart Platform Product

---



S2200-0912

Smart Sensor of IR

---



S2200-0901

Smart Alert of Gas

---



S2200-0902

Smart Alert of Smoking

---



S2200-0903

Smart Sensor of Water logging

---

Simon-Smart Platform Product

---



S2200-0911

Smart Camera



S2200-0907

Smart Detector of PM2.5

---

Third-party brand products can be controlled

---



Air Cleaner



A/C



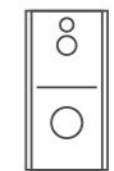
Aroma Air Humidifier



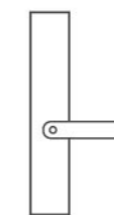
Floor Mopping Robot



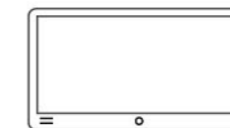
TV



Visual Doorbell



Smart Lock



Background Music system

( The Products should follow the specific list provided by Simo )